

USB-High Speed Serial Converter

User's Manual

Model ATC-810



Overview

Congratulations on your purchase of the ATC's USB-high Speed Serial Converter. This device provides a simple and easy way to connect Universal Serial Bus (USB) and Serial port interface. With the advantage of USB port, users have the capability to utilize the peripheral with serial port interface in an easy to use environment such as plug and play & hot swap function. This adapter is designed for ideal connections to Cellular Phone, Digital Camera, Modems or ISDN terminal adapter with over 1Mbps data transfer rate.

The USB-high Speed Serial Converter and software drivers are capable of providing a no-firmware-change feature that enable USB interface to be transparent to serial port peripherals with minimum modifications.

Package Content

- Hardware: USB-High Speed Serial Converter

- Software: USB-High Speed Serial Converter driver on CD-ROM
- User's Manual

Product Features

- USB Specification Rev. 1.1,2.0 compliant
- Support the RS232 Serial interface
- Over 460Kbps data transfer rate
- Support remote wake-up and power management

DB9 male Pin Assignment: (Figure 1)

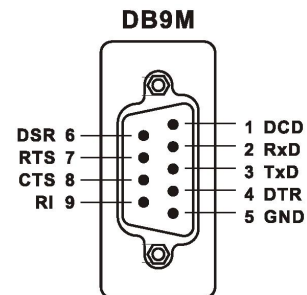


Figure 1

RS-232 Pinout (DB9 Male DTE)

PIN	Signal Name	RS-232 Signals
1	DCD (Data Carrier Detect)	Input
2	RXD (Receive Data)	Input
3	TXD (Transmit Data)	Output
4	DTR (DTE Ready)	Output
5	GND (Ground)	Ground
6	DSR (DCE Ready)	Input
7	RTS (Request to Send)	Output
8	CTS (Clear to Send)	Input
9	RI (Ring Indicator)	Input

LED indication

Red LED ----- Data Sending From USB port to RS-232

Serial Port side

Green LED -----Data Receiving from RS-232 Serial port side to USB port

System Requirements

- IBM PC 486DX4-100 MHz CPU or higher or compatible system
- Available USB port
- CD-ROM drive
- Windows 98. Windows 2000 .Windows XP.Vista Windows 7/8/10,Win CE or IMAG

Driver Installation

Follow the steps below to install driver of USB-High Speed Serial Converter:

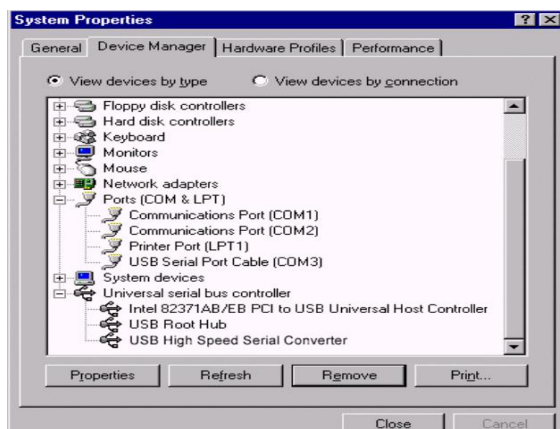
1. Power on your computer and make sure that the USB port is enabled and working properly.
2. Plug in the USB-High Speed Serial Converter into the USB port and run the **Add New Hardware Wizard** to assist you in setting up the new device. Click **Next** to continue.
3. Insert the USB-HS Serial Converter software driver into the CD-ROM drive and click Next to continue. For Windows 98, click **Search for the best driver for your device** and click to search driver from the floppy drive D:\DRIVER\Win98&Win2000.



- Windows will detect the driver (**FTDIBUS.INF**) and shows the **USB HS SERIAL CONVERTER**. Click **Next** to continue installation.



- Click **Next** to continue and let Windows copy the needed files to your hard disk.

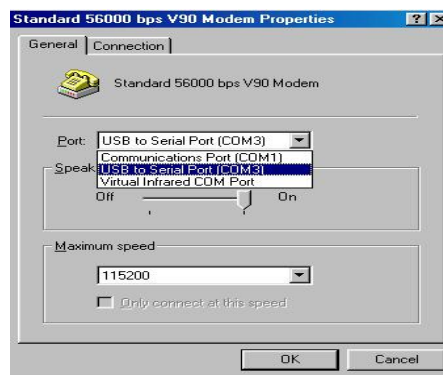


- When Windows finished installing the software required for the new **USB to Serial Cable**, click **Finish**.

Setting Up the RS232 Serial Device

Follow the steps below to connect your RS232 Serial Device (ie: Modem) to the USB port of your PC:

- Turn off your Modem. Plug the DB 9 (or DB 25) connector of the USB-HS Serial Converter into your Modem. Connect the other end of the USB-HS Serial Converter to an USB type A to type B cable. Turn on the Modem afterwards.
- Turn on your computer and plug in the USB connector of the USB-HS Serial Converter into the USB port.
- If you have already installed a Modem device before, click **Start**, **Settings**, **Modems**. Open **Modems Properties**, select the Modem, click **Properties**. In **General** tab, please change the **Port** value to **USB Serial Port (COM3)**.
- After finishing these processes, you can use USB to Serial Bridge Cable to connect RS232 Serial 56K FAX Modem and execute the Dial-up function to connect Internet, and send the FAX with the FAX software(ie: Microsoft FAX) properly.

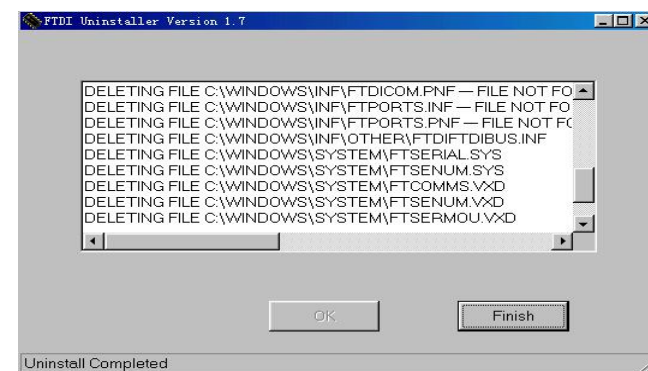


Uninstalling the Driver Program

If you want to remove the USB-HS Serial Converter driver program, you can uninstall it by following the steps below:

- Unplug the USB-HS Serial Converter from your PC.

- Run the **D:\Driver\Win98&win2000\FTDIUNIN.EXE** program from the software CD-ROM, Click **finish** then reboot the PC.



Disclaimer

Information in this document is subject to change without notice. The manufacturer does not make any representations or warranties (implied or otherwise) regarding the accuracy and completeness of this document and shall in no event be liable for any loss of profit or any other commercial damage, including but not limited to special, incidental, consequential, or other damages.

No part of this document may be reproduced or transmitted in any form by any means, electronic or mechanical, including photocopying, recording or information recording and retrieval systems without the express written permission of the manufacturer.

All brand names and product names used in this document are trademarks, or registered trademarks of their respective holders.

FCC Statement

This device generates and uses radio frequency and may cause interference to radio and television reception if not installed and used properly. This has been tested and found to comply with the limits of a Class B computing device in accordance with the specifications in Part 15 of FCC Rules. These specifications are designed to provide reasonable protection against such interference in a residential installation. However, there is no guarantee that interference will not occur in a particular installation. If this device does cause harmful interference to radio or television reception, which can be determined by plugging the device in and out, the user can try to correct the interference by one or more of the following measures:

- Reorient or relocate the receiving antenna.
- Increase the separation between the device and receiver.
- Connect the computer into an outlet on a circuit different from that to which the receiver is connected.
- Consult the dealer or an experienced radio/TV technician for help.

Warranty

We warrant the equipment to be free from defects in material and workmanship, under normal and proper use and in its unmodified condition, for 3 year, starting on the date it is delivered for use. Out of warranty equipment may be returned to us. Return shipping charges will be billed to the customer. The repaired unit will have a 90-day warranty.